

# **FORNI TUNNEL ELETTRICI VENTILATI**

*VENTILATED ELECTRICAL CONVEYORS*



## **TNV40E - TNV50E - TNV65E - TNV80E**

**IT** - Esploso Ricambi e Schemi Elettrici

**EN** - Exploded view of spare parts and electrical diagrams

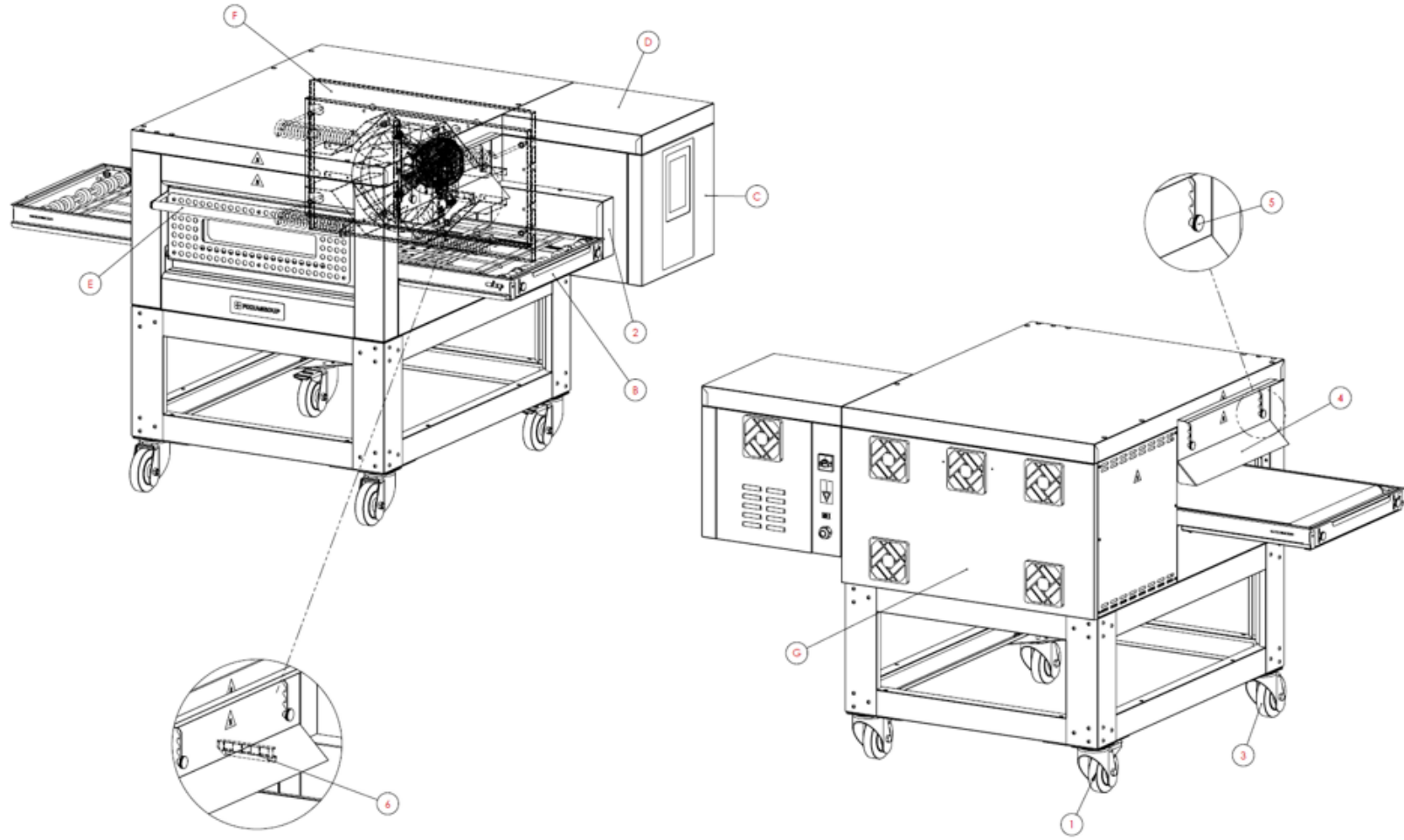
**FR** - Vue éclatée des pièces détachées et schémas électriques

**DE** - Explosionszeichnung der Ersatzteile und Schaltpläne

**ES** - Vista despiezada de repuestos y esquemas eléctricos

**RU** - Покомпонентный вид запасных частей и электрические схемы

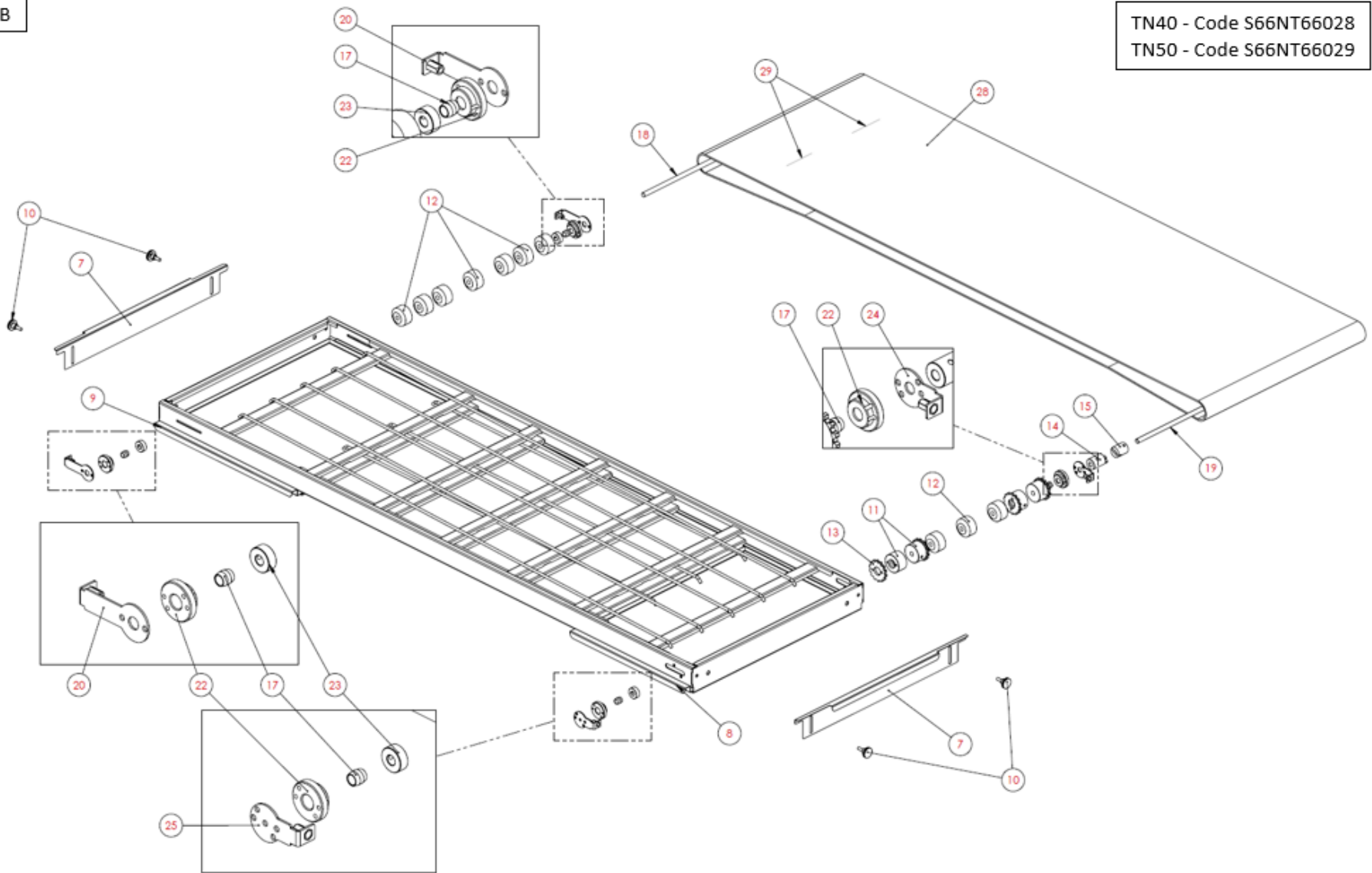
A23FN66002 – ESPLOSO TUNNEL ELETTRICO



ESPLOSI RICAMBI / EXPLODED VIEW

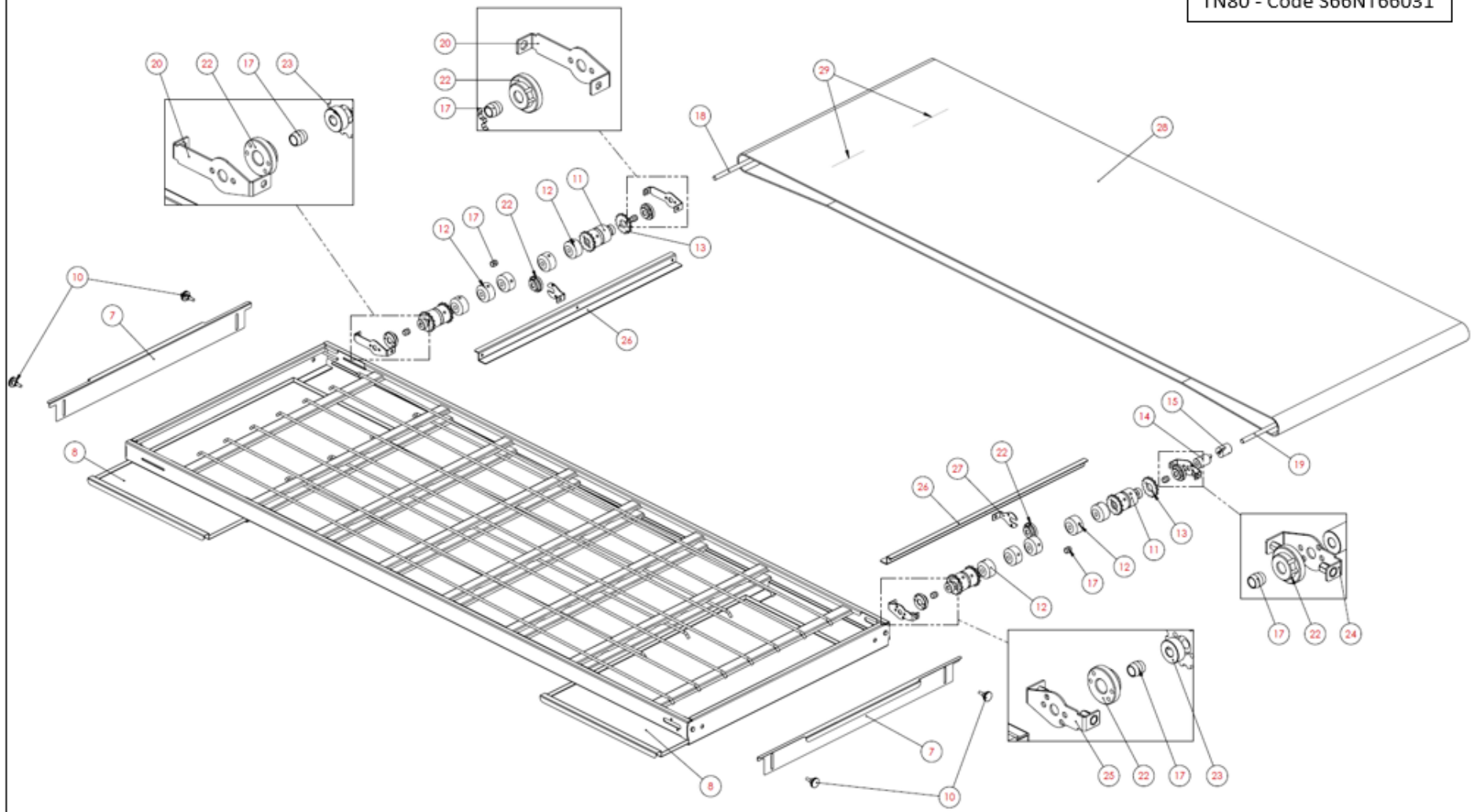
B

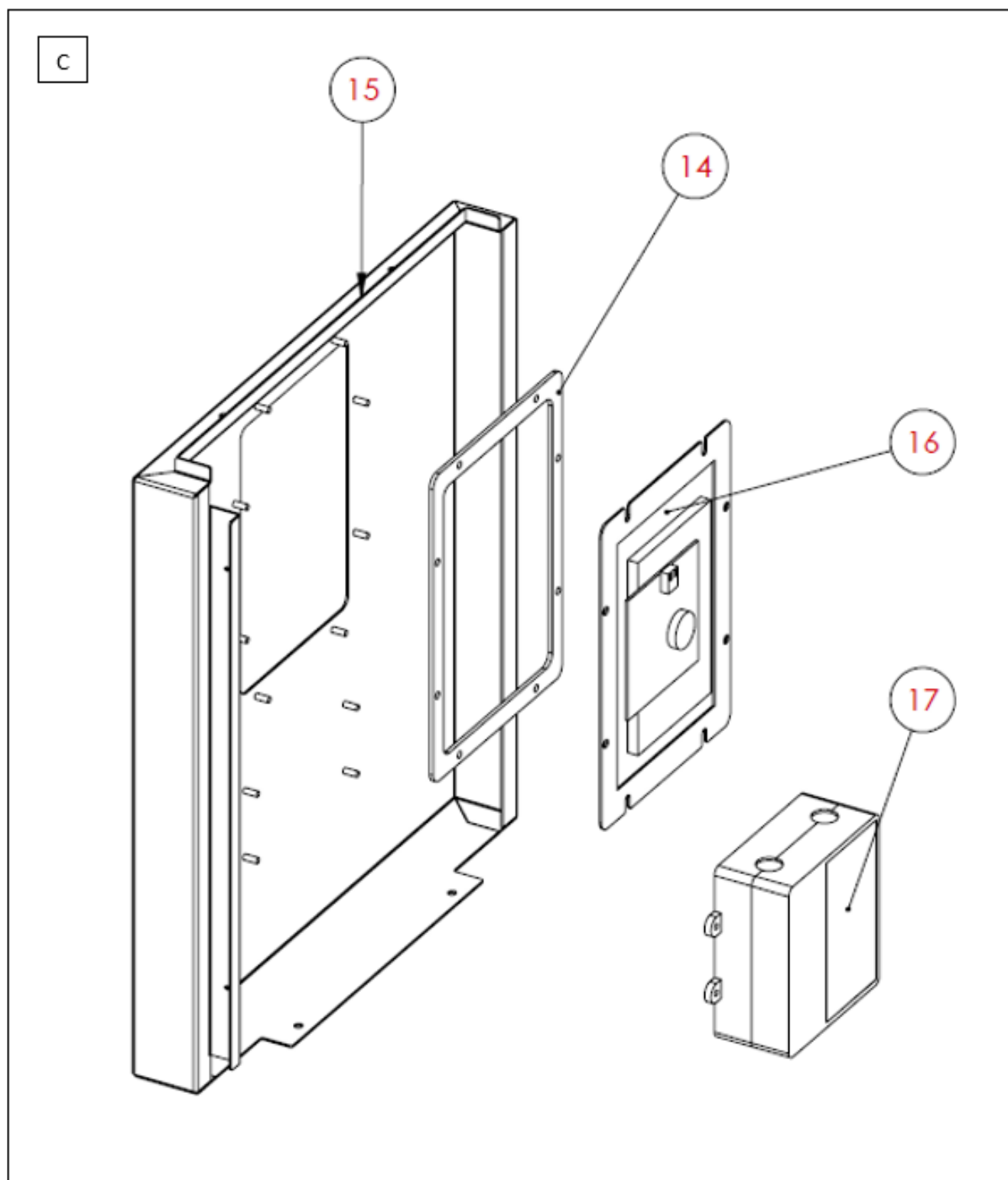
TN40 - Code S66NT66028  
TN50 - Code S66NT66029



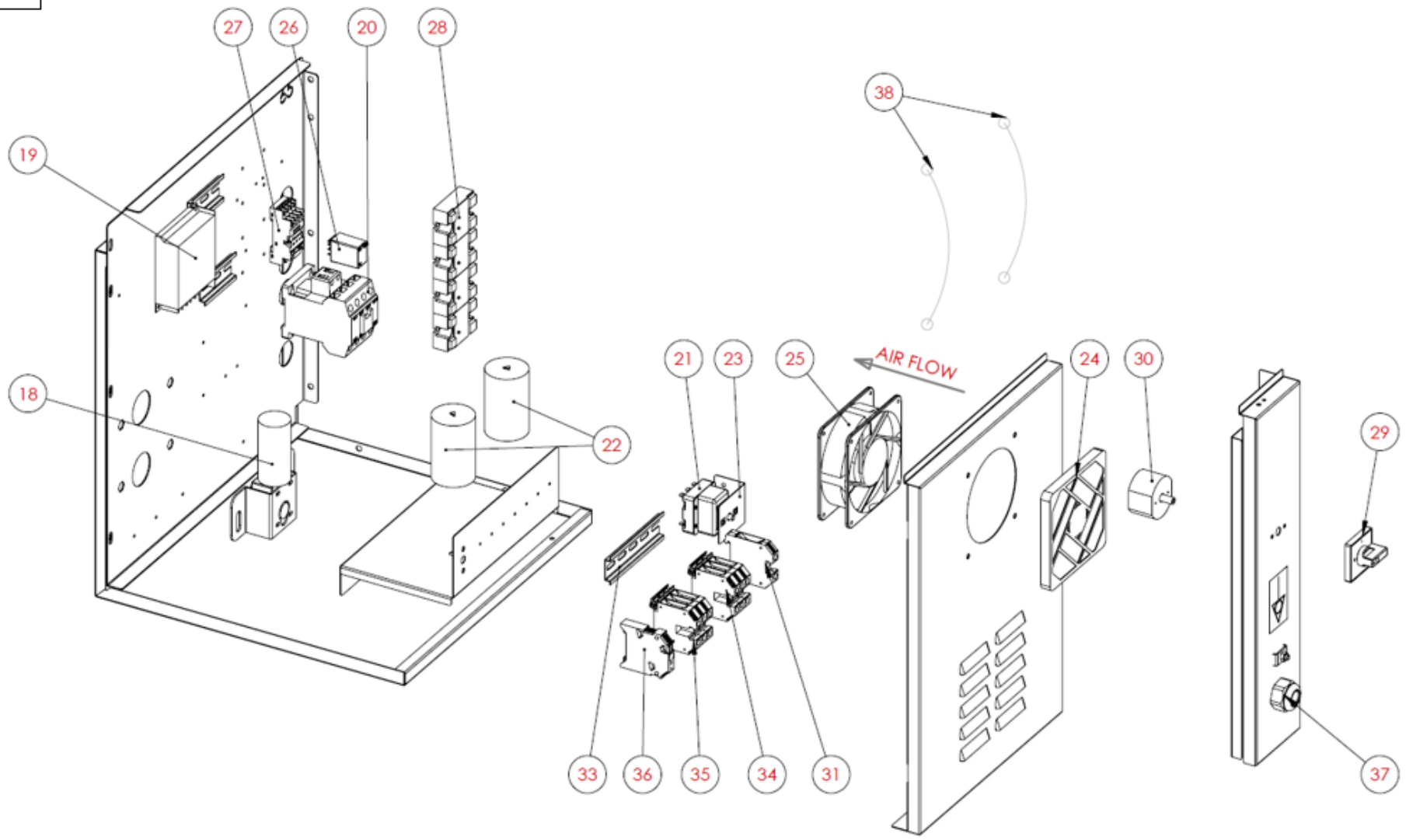
B

TN65 - Code S66NT66030  
TN80 - Code S66NT66031

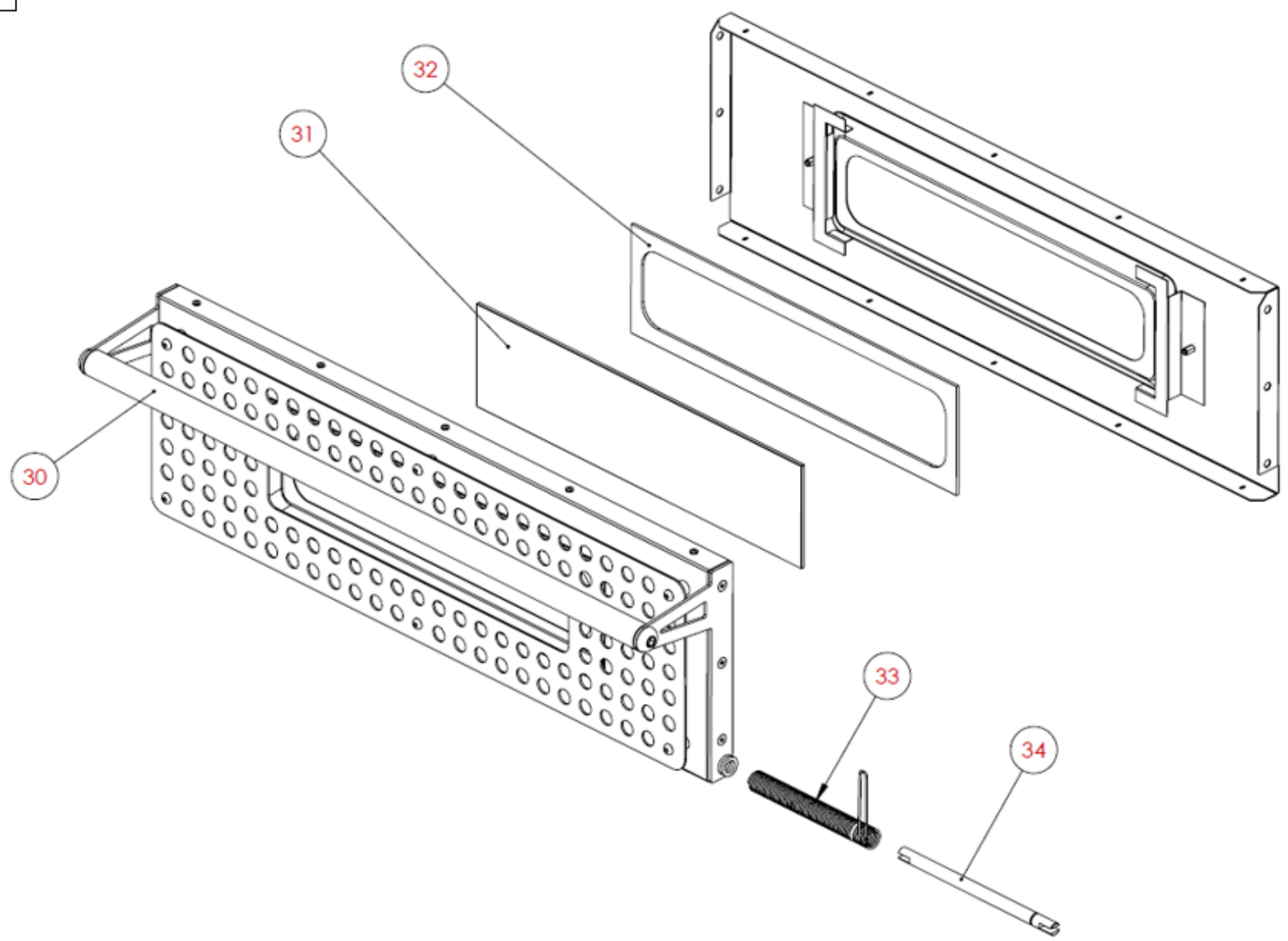




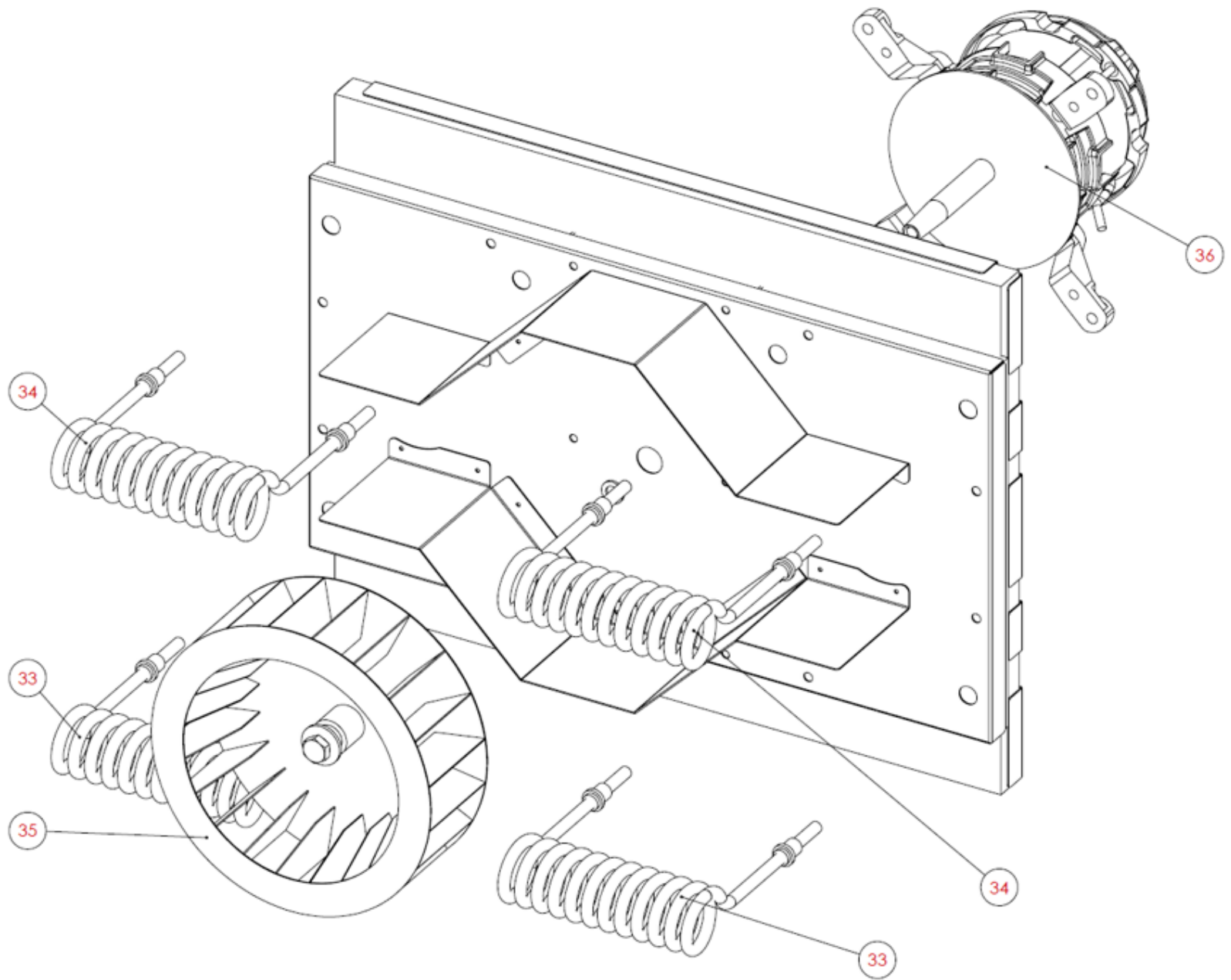
D



E

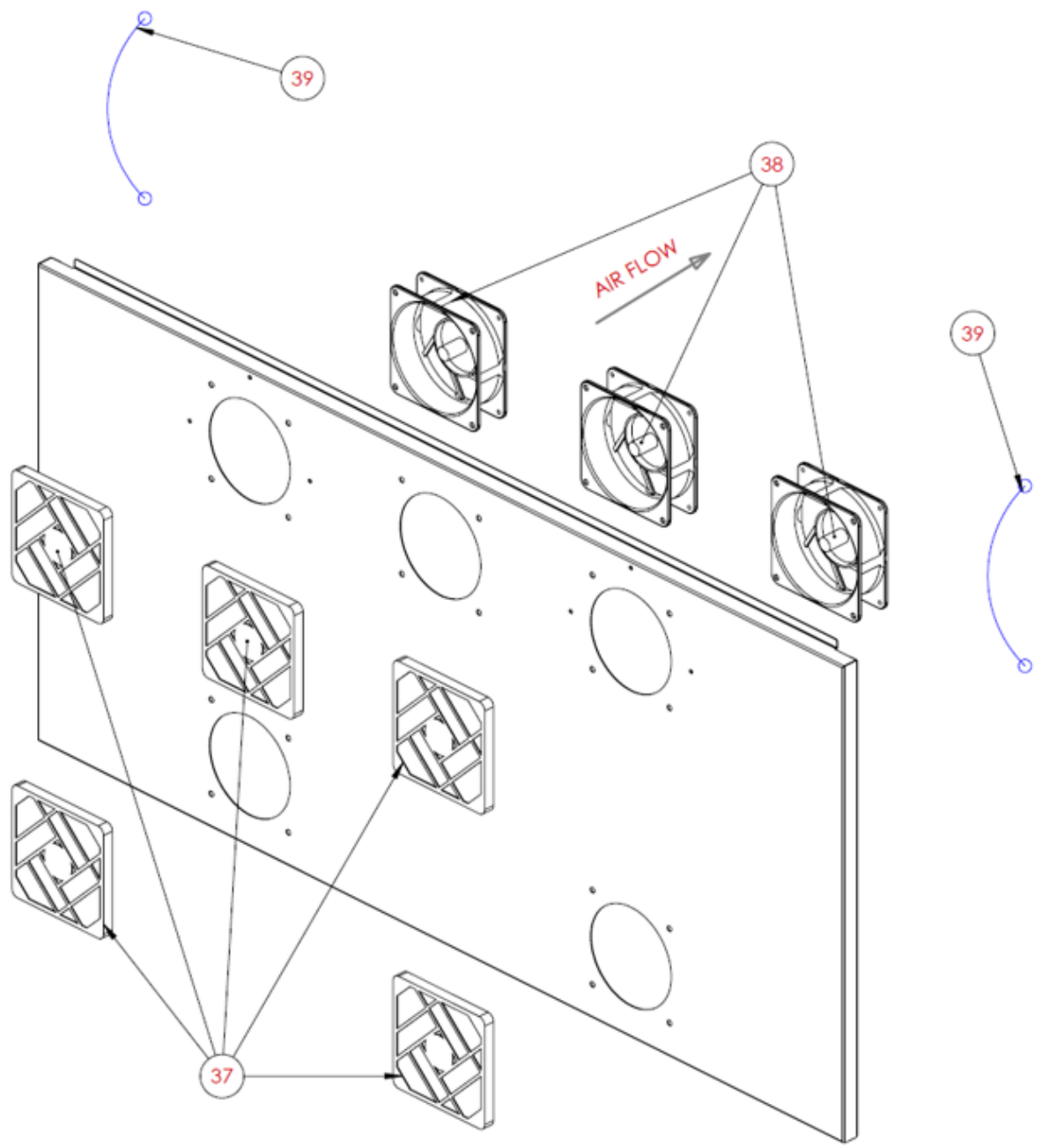


F





G



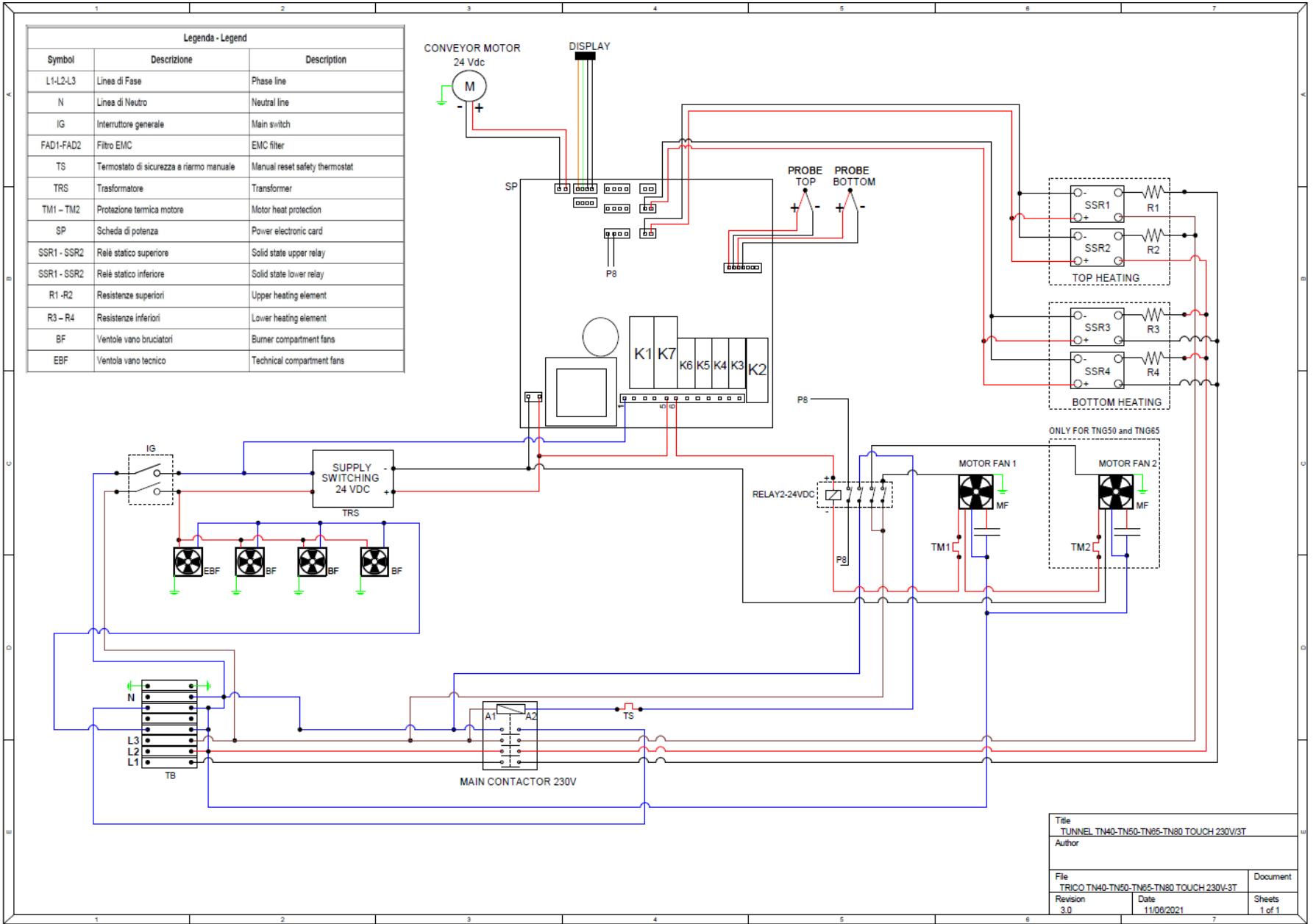
FORNO TUNNEL VENTILATO ELETTRICO TOUCH							TNV40E P09TNI2024	TNV50E P09TNI2018	TNV65E P09TNI2019	TNV80E P09TNI2020
Assieme	Pos.	Codice	Descrizione	Description EN	Description FR	Description DE	Q.tà	Q.tà	Q.tà	Q.tà
//	1	A90RX89 010	RUOTA SENZA FRENO	WHEEL WITHOUT BRAKE	ROUE SANS FREIN	RAD OHNE BREMSE	2	2	2	2
	2	S33MR66 003	CARTER MOTORE	CRANCASE MOTOR	CARTER MOTEUR	MOTORKURBELGEHÄU SE	1	-	-	-
		S33MR66 005					-	1	-	-
		S33MR66 001					-	-	1	-
		S33MR66 007					-	-	-	1
	3	A90RX89 009	RUOTA CON FRENO	WHEEL WITH BRAKE	ROUE AVEC FREIN	RAD MIT BREMSE	2	2	2	2
	4	S41CH66 018	CAPPETTA REMOVIBILE	REMOVABLE END PLUG	HOTTE AMOVIBLE	ABNEHMBARE ABDECKUNG	2	-	-	-
		S41CH66 020	CAPPETTA REMOVIBILE	REMOVABLE END PLUG	HOTTE AMOVIBLE	ABNEHMBARE ABDECKUNG	-	2	-	-
		S41CH66 022	CAPPETTA REMOVIBILE	REMOVABLE END PLUG	HOTTE AMOVIBLE	ABNEHMBARE ABDECKUNG	-	-	2	-
		S41CH66 024	CAPPETTA REMOVIBILE	REMOVABLE END PLUG	HOTTE AMOVIBLE	ABNEHMBARE ABDECKUNG	-	-	-	2
	5	A99FS66 001	POMELLO	KNOB	MANETTE	KNAUF	4	4	4	4
	6	S50ST660 47	STAFFA THERMOSTATO	THERMOSTAT BRACKET	ÉTRIER DE THERMOSTAT	THERMOSTATHALTERU NG	1	1	1	1
	B	S66NT66 028	ASSIEME NASTRO COMPLETO	COMPLETE CONVEYOR ENSEMBLE	ENSEMBLE TAPIS COMPLET	VOLLSTÄNDIGE BANDBAUGRUPPE	1	-	-	-
S66NT66 029		ASSIEME NASTRO COMPLETO	COMPLETE CONVEYOR ENSEMBLE	ENSEMBLE TAPIS COMPLET	VOLLSTÄNDIGE BANDBAUGRUPPE	-	1	-	-	
S66NT66 030		ASSIEME NASTRO COMPLETO	COMPLETE CONVEYOR ENSEMBLE	ENSEMBLE TAPIS COMPLET	VOLLSTÄNDIGE BANDBAUGRUPPE	-	-	1	-	
S66NT66 031		ASSIEME NASTRO COMPLETO	COMPLETE CONVEYOR ENSEMBLE	ENSEMBLE TAPIS COMPLET	VOLLSTÄNDIGE BANDBAUGRUPPE	-	-	-	1	
C	-	FRONTALE COMANDI	CONTROLS PANEL	PANNEAU DE COMMANDES FRONTAL	FRONTALE STEUERUNGEN	1	1	1	1	
D	S72FN66 009	IMPIANTO ELETTRICO	ELECTRICAL SYSTEM	CIRCUIT ÉLECTRIQUE	ELEKTRISCHE ANLAGE	1	-	-	-	
	S72FN66 013	IMPIANTO ELETTRICO	ELECTRICAL SYSTEM	CIRCUIT ÉLECTRIQUE	ELEKTRISCHE ANLAGE	-	1	-	-	
	S72FN66 011	IMPIANTO ELETTRICO	ELECTRICAL SYSTEM	CIRCUIT ÉLECTRIQUE	ELEKTRISCHE ANLAGE	-	-	1	-	
	S72FN66 014	IMPIANTO ELETTRICO	ELECTRICAL SYSTEM	CIRCUIT ÉLECTRIQUE	ELEKTRISCHE ANLAGE	-	-	-	1	
E	S66PT66 028	ASSIEME PORTA	DOOR ENSEMBLE	ENSEMBLE PORTE	TÜRBAUGRUPPE	1	-	-	-	
	S66PT66 026	ASSIEME PORTA	DOOR ENSEMBLE	ENSEMBLE PORTE	TÜRBAUGRUPPE	-	1	-	-	
	S66PT66 024	ASSIEME PORTA	DOOR ENSEMBLE	ENSEMBLE PORTE	TÜRBAUGRUPPE	-	-	1	-	
	S66PT66 022	ASSIEME PORTA	DOOR ENSEMBLE	ENSEMBLE PORTE	TÜRBAUGRUPPE	-	-	-	1	
F	S66MT66 003	ASSIEME VENTILAZIONE	VENTILATION ENSEMBLE	ENSEMBLE VENTILATION	LÜFTUNGSBAUGRUPPE	1	-	-	-	
	S66MT66 002	ASSIEME VENTILAZIONE	VENTILATION ENSEMBLE	ENSEMBLE VENTILATION	LÜFTUNGSBAUGRUPPE	-	1	-	-	
	S66MT66 001	ASSIEME VENTILAZIONE	VENTILATION ENSEMBLE	ENSEMBLE VENTILATION	LÜFTUNGSBAUGRUPPE	-	-	1	-	
	S66MT66 005	ASSIEME VENTILAZIONE	VENTILATION ENSEMBLE	ENSEMBLE VENTILATION	LÜFTUNGSBAUGRUPPE	-	-	-	1	
G	-	PANNELLO POSTERIORE	BACK PANEL	PANNEAU ARRIÈRE	HINTERES PANEEL	1	1	1	1	

B	7	S50CH66001	CHIUSURA NASTRO	CONVEYOR CLOSURE	FERMETURE DU TAPIS	BANDSCHLIEßUNG	2	-	-	-
		S29SC66001	CHIUSURA NASTRO	CONVEYOR CLOSURE	FERMETURE DU TAPIS	BANDSCHLIEßUNG	-	2	-	-
		S29SC66003	CHIUSURA NASTRO	CONVEYOR CLOSURE	FERMETURE DU TAPIS	BANDSCHLIEßUNG	-	-	2	-
		S29SC66006	CHIUSURA NASTRO	CONVEYOR CLOSURE	FERMETURE DU TAPIS	BANDSCHLIEßUNG	-	-	-	2
	8	S67PB66001	VASSOIO DESTRO	RIGHT TRY	PLATEAU DROIT	WANNE RECHTS	1	-	-	-
		S67PB66005	VASSOIO DESTRO	RIGHT TRY	PLATEAU DROIT	WANNE RECHTS	-	1	-	-
		S67PB66009	VASSOIO DESTRO/SINISTRO	RIGHT/LEFT TRY	PLATEAU DROIT/GAUCHE	WANNE RECHTS/LINKS	-	-	1	-
		S67PB66011	VASSOIO DESTRO/SINISTRO	RIGHT/LEFT TRY	PLATEAU DROIT/GAUCHE	WANNE RECHTS/LINKS	-	-	-	1
	9	S67PB66003	VASSOIO SINISTRO	LEFT TRY	PLATEAU GAUCHE	WANNE LINKS	1	-	-	-
		S67PB66007	VASSOIO SINISTRO	LEFT TRY	PLATEAU GAUCHE	WANNE LINKS	-	1	-	-
		S67PB66009	VASSOIO DESTRO/SINISTRO	RIGHT/LEFT TRY	PLATEAU DROIT/GAUCHE	WANNE RECHTS/LINKS	-	-	1	-
		S67PB66011	VASSOIO DESTRO/SINISTRO	RIGHT/LEFT TRY	PLATEAU DROIT/GAUCHE	WANNE RECHTS/LINKS	-	-	-	1
	10	A99FS66001	POMELLO	KNOB	MANETTE	KNAUF	4	4	4	4
	11	A75TR66001	RULLO	ROLLER	ROULEAU	ROLLE	4	4	4	4
	12	A75TR66002	RULLO FOLLE	NEEDLE ROLLER	ROULEAU AU POINT MORT	FREILAUFROLLE	10	10	12	16
	13	S74RU66004	RUOTA DENTATA	COGWHEEL	ROUE DENTÉE	ZAHNRAD	4	4	4	4
	14	S64TR66003	BOCCOLA NASTRO	CONVEYOR BUSH	DOUILLE DU TAPIS	BANDBUCHSE	1	1	1	1
	15	S64TR66001	BOCCOLA MOTORIDUTTORE	GEARMOTOR BUSH	DOUILLE MOTORÉDUCTEUR	GETRIEBEMOTORBUCHSE	1	1	1	1
	17	S64RT66002	BRONZINA	BRONZE BUSCHING	PALIER LISSE	GLEITLAGER	4	4	4	6
	18	S63IN66003	TONDINO DI ROTAZIONE	ROTATION ROD	TORON DE ROTATION	ROTATIONSSCHEIBE	1	-	-	-
		S63IN66001	TONDINO DI ROTAZIONE	ROTATION ROD	TORON DE ROTATION	ROTATIONSSCHEIBE	-	1	-	-
		S63IN66002	TONDINO DI ROTAZIONE	ROTATION ROD	TORON DE ROTATION	ROTATIONSSCHEIBE	-	-	1	-
		S63IN66004	TONDINO DI ROTAZIONE	ROTATION ROD	TORON DE ROTATION	ROTATIONSSCHEIBE	-	-	-	1
	19	S63RT66006	TONDINO TRAZIONE	TRACTION ROD	TORON DE TRACTION	ZUGSCHEIBE	1	-	-	-
		S63RT66005	TONDINO TRAZIONE	TRACTION ROD	TORON DE TRACTION	ZUGSCHEIBE	-	1	-	-
		S63RT66007	TONDINO TRAZIONE	TRACTION ROD	TORON DE TRACTION	ZUGSCHEIBE	-	-	1	-
		S63RT66008	TONDINO TRAZIONE	TRACTION ROD	TORON DE TRACTION	ZUGSCHEIBE	-	-	-	1
	20	S30IN66006	PIASTRINA TENDINASTRO	CONVEYOR TENSIONER	PLAQUETTE TENDEUR DE TAPIS	BANDSPANNPLATTE	2	2	2	2
22	S64RT66001	BOCCOLA SEDE BRONZINA	BRONZE BUSCHING BASE	DOUILLE DE LOGEMENT DE PALIER LISSE	GLEITLAGERBUCHSE	4	4	4	6	
23	S64AL66001	BOCCOLA FERMA ALBERO	BUSH STOPS ROD	DOUILLE DE FIXATION D'ARBRE	WELLENSPERRBUCHSE	3	3	3	3	
24	S30IN66008	PIASTRINA TENDINASTRO DX	RIGHT TENSIONER PLATE	PLAQUETTE TENDEUR DE TAPIS DROITE	BANDSPANNPLATTE RE	1	1	1	1	
25	S30IN66010	PIASTRINA TENDINASTRO SX	LEFT TENSIONER PLATE	PLAQUETTE TENDEUR DE TAPIS GAUCHE	BANDSPANNPLATTE LI	1	1	1	1	
26	S74SP66002	SUPPORTO TIRANTI NASTRO	TIE ROD SUPPORT	SUPPORT DE TIRANTS DE TAPIS	BANDZUGSTANGENHALTERUNG	-	-	2	-	
	S74SP66006	SUPPORTO TIRANTI NASTRO	TIE ROD SUPPORT	SUPPORT DE TIRANTS DE TAPIS	BANDZUGSTANGENHALTERUNG	-	-	-	2	
27	S74SP66004	SUPPORTO ALBERO NASTRO	CONVEYOR SHAFT SUPPORT	SUPPORT D'ARBRE DE TAPIS	BANDWELLENHALTERUNG	-	-	2	2	
28	A89NT00008	NASTRO TRASPORTATORE	CONVEYOR BELT	TAPIS ROULANT	FÖRDERBAND	3,20 mt.	-	-	-	

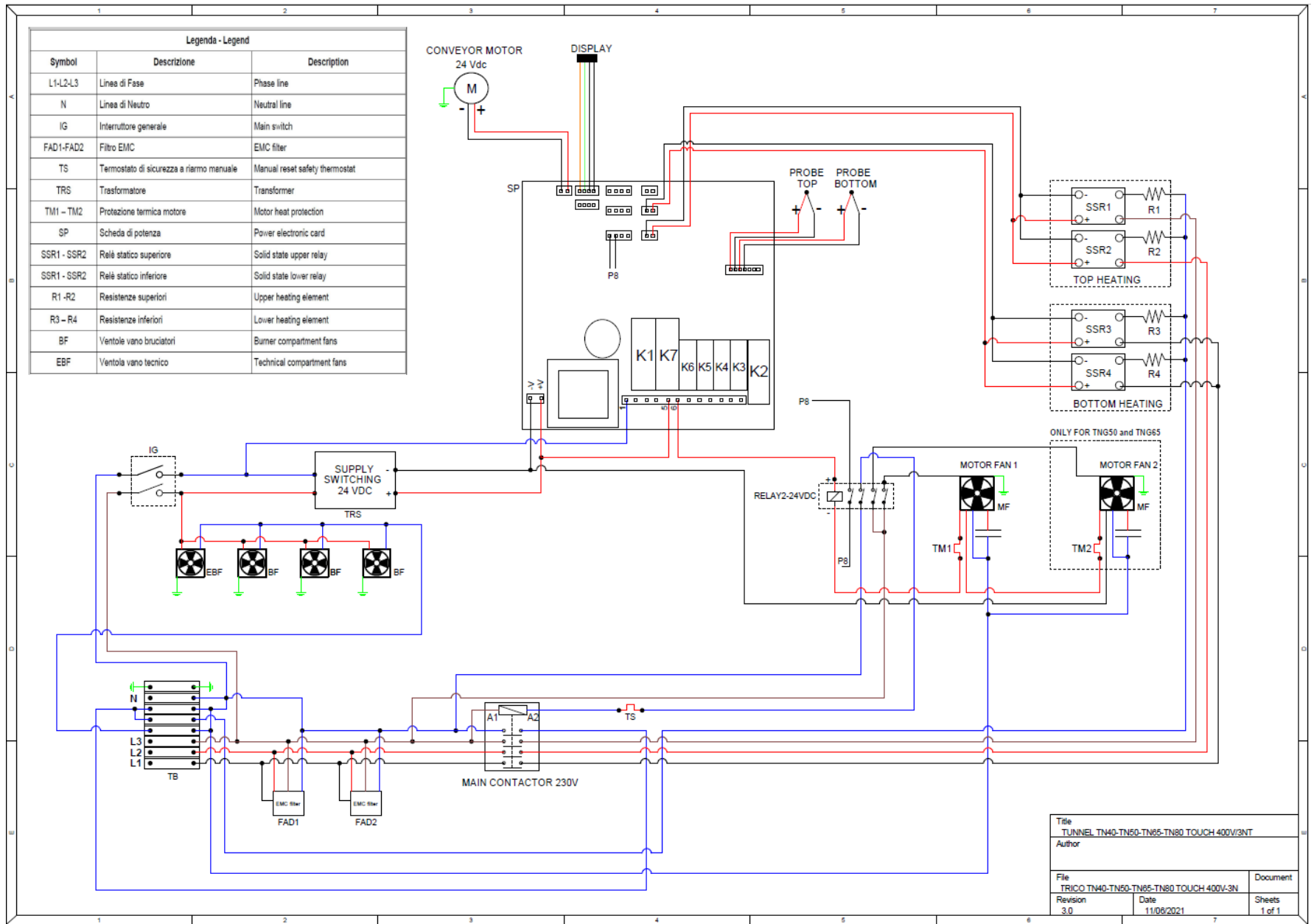
B		A89NT00005	NASTRO TRASPORTATORE	CONVEYOR BELT	TAPIS ROULANT	FÖRDERBAND	-	3,27 mt.	-	-
		A89NT00006	NASTRO TRASPORTATORE	CONVEYOR BELT	TAPIS ROULANT	FÖRDERBAND	-	-	3,77 mt.	-
		A89NT00007	NASTRO TRASPORTATORE	CONVEYOR BELT	TAPIS ROULANT	FÖRDERBAND	-	-	-	4,15 mt.
	29	A89NT00009	GIUNZIONE NASTRO	CONVEYOR BELT	JONCTION DU TAPIS	BANDANSATZ	2	2	3	5
C	14	A94GU65013	GUARNIZIONE DISPLAY	DISPLAY GASKET	RONDELLE D'ÉTANCHÉITÉ DE L'ÉCRAN	DISPLAY-DICHTUNG	1	1	1	1
	15	S65CI66019	FRONTALE COMANDI	CONTROLS PANEL	PANNEAU DE COMMANDES FRONTAL	FRONTALE STEUERUNGEN	1	-	-	-
		S65CI66015	FRONTALE COMANDI	CONTROLS PANEL	PANNEAU DE COMMANDES FRONTAL	FRONTALE STEUERUNGEN	-	1	-	-
		S65CI66011	FRONTALE COMANDI	CONTROLS PANEL	PANNEAU DE COMMANDES FRONTAL	FRONTALE STEUERUNGEN	-	-	1	-
		S65CI66017	FRONTALE COMANDI	CONTROLS PANEL	PANNEAU DE COMMANDES FRONTAL	FRONTALE STEUERUNGEN	-	-	-	1
	16	A88SE00005	DISPLAY 7"	DISPLAY 7"	ÉCRAN 7"	7-ZOLL-DISPLAY	1	1	1	1
17	A88SE00007	SCHEDA POTENZA	POWER CARD BOARD	CARTE DE PUISSANCE	LEISTUNGSKARTE	1	1	1	1	
D	18	S66MT66004	MOTORIDUTTORE	GEARMOTOR	MOTORÉDUCTEUR	GETRIEBEMOTOR	1	1	1	1
	19	A88SE00008	TRASFORMATORE	TRANSFORMER	TRANSFORMATEUR	TRAFO	1	1	1	1
	20	A87AZ69034	TELERUTTORE	CONTACTOR	TÉLÉRUPTEUR	SCHÜTZ	1	-	-	-
		A87AZ69035	TELERUTTORE	CONTACTOR	TÉLÉRUPTEUR	SCHÜTZ	-	1	1	1
	21	A88TX85005	TERMOSTATO DI SICUREZZA	SAFETY THERMOSTAT	THERMOSTAT DE SÉCURITÉ	SICHERHEITSTHERMOSTAT	1	1	1	1
	22	A92VA66002	FILTRO EMC	EMC FILTER	FILTRE EMC	EMV-FILTER	2	2	2	2
	23	S50ST66047	STAFFA TERMOSTATO	THERMOSTAT BRACKET	ÉTRIER DE THERMOSTAT	THERMOSTATHALTERUNG	1	1	1	1
	24	A87VN00013	PROTEZIONE VENTOLA	PROTECTION FAN	PROTECTION DE VENTILATEUR	VENTILATORSCHUTZ	1	1	1	1
	25	A87VN00002	VENTOLA	FAN	VENTILATEUR	VENTILATOR	1	1	1	1
	26	A87AZ69032	RELÈ	RELAY	RELAIS	RELAIS	1	1	1	1
	27	A87CX62008	ZOCOLO RELÈ	RELAY SOCKET	SOCLE DE RELAIS	RELAIS-SOCKEL	1	1	1	1
	28	A87AZ69033	SSR	SSR	SSR	SSR	4	4	4	4
	29	A87AZ69011	MASCHERINA INTERRUTTORE	SWITCH PLATE	CACHE-INTERRUPTEUR	SCHALTERMASKE	1	1	1	1
	30	A87AZ69004	INTERRUTTORE GENERALE	MAIN SWITCH	INTERRUPTEUR GÉNÉRAL	HAUPTSCHALTER	1	1	1	1
	31	A87CX62015	MORSETTO GIALLO-VERDE	GREEN-YELLOW CLAMP	BORNE JAUNE-VERTE	GELB-GRÜNE KLEMME	1	1	1	1
	33	S72SB66002	OMEGA L=120mm	BAR L=120mm	OMEGA L=120mm	OMEGA L=120mm	1	1	1	1
	34	A87CX62014	MORSETTO BLU	BLUE CLAMP	BORNE BLEUE	BLAUE KLEMME	4	4	4	4
	35	A87CX62016	MORSETTO BEIGE	BEIGE CLAMP	BORNE BEIGE	BEIGE KLEMME	3	3	3	3
	36	A87CX62019	COPERCHIO MORSETTI	COVER CLAMP	COUVERCLE DE BORNES	KLEMMENDECKEL	1	1	1	1
	37	A86EL46011	PRESSACAVO	CABLE GLAND	PRESSE-CÂBLE	KABELFÜHRUNG	1	1	1	1
A86EL46012		CONTRODADO	LOCK NUT	CONTRE-ÉCROU	KONTERMUTTER	1	1	1	1	
38	A87CX63071	CORDINO PER PANNELLI	CORD FOR PANELS	CORDON POUR PANNEAUX	SCHNUR FÜR PANELEE	2	2	2	2	
E	30	S66MG66004	ASSIEME MANIGLIONE	HANDLE ENSEMBLE	ENSEMBLE POIGNÉE	GRIFFBAUGRUPPE	1	-	-	-
		S66MG66001	ASSIEME MANIGLIONE	HANDLE ENSEMBLE	ENSEMBLE POIGNÉE	GRIFFBAUGRUPPE	-	1	-	-
		S66MG66002	ASSIEME MANIGLIONE	HANDLE ENSEMBLE	ENSEMBLE POIGNÉE	GRIFFBAUGRUPPE	-	-	1	-

		S66MG6 6003	ASSIEME MANIGLIONE	HANDLE ENSEMBLE	ENSEMBLE POIGNÉE	GRIFFBAUGRUPPE	-	-	-	1
E	31	A00PT55 003	VETRO PORTA	DOOR GLASS	VITRE PORTE	TÜRGLAS	1	1	1	1
	32	A94GU65 002	GUARNIZIONE VETRO PORTA	DOOR GLASS GASKET	RONDELLE D'ÉTANCHÉITÉ DE VITRE PORTE	TÜRGLASDICHTUNG	1	1	1	1
	33	A86ME3 0004	MOLLA PORTA	DOOR SPRING	RESSORT DE PORTE	TÜRFEDER	1	1	1	1
	34	S69ML55 001	PERNO MOLLA	PIN FOR SPRING	PIVOT DE RESSORT	FEDERSTIFT	1	1	1	1
F	33	A87RZ65 071	RESISTENZA 230V 2200W	HEATING ELEMENT 230V 2200W	RÉSISTANCE 230V 2200W	HEIZELEMENT 230V 2200W	2	-	-	-
		A87RZ65 070	RESISTENZA 230V 4100W	HEATING ELEMENT 230V 4100W	RÉSISTANCE 230V 4100W	HEIZELEMENT 230V 4100W	-	2	-	-
		A87RZ65 068	RESISTENZA 230V 5400W	HEATING ELEMENT 230V 5400W	RÉSISTANCE 230V 5400W	HEIZELEMENT 230V 5400W	-	-	2	
		A87RZ65 073	RESISTENZA 230V 6000W	HEATING ELEMENT 230V 6000W	RÉSISTANCE 230V 6000W	HEIZELEMENT 230V 6000W	-	-	-	2
	34	A87RZ65 072	RESISTENZA 230V 1500W	HEATING ELEMENT 230V 1500W	RÉSISTANCE 230V 1500W	HEIZELEMENT 230V 1500W	2	-	-	-
		A87RZ65 069	RESISTENZA 230V 2800W	HEATING ELEMENT 230V 2800W	RÉSISTANCE 230V 2800W	HEIZELEMENT 230V 2800W	-	2	-	-
		A87RZ65 067	RESISTENZA 230V 3600W	HEATING ELEMENT 230V 3600W	RÉSISTANCE 230V 3600W	HEIZELEMENT 230V 3600W	-	-	2	
		A87RZ65 073	RESISTENZA 230V 6000W	HEATING ELEMENT 230V 6000W	RÉSISTANCE 230V 6000W	HEIZELEMENT 230V 6000W	-	-	-	2
	35	A87VN00 008	VENTOLA RADIALE	RADIAL FAN	VENTILATEUR RADIAL	RADIALVENTILATOR	1	-	1	1
		A87VN00 009	VENTOLA RADIALE	RADIAL FAN	VENTILATEUR RADIAL	RADIALVENTILATOR		1		
	36	A87MR5 5034	MOTORE	MOTOR	MOTEUR	MOTOR	1	1	-	-
		A87MR5 5033	MOTORE	MOTOR	MOTEUR	MOTOR	-	-	1	1
G	37	A87VN00 013	PROTEZIONE VENTOLA	PROTECTION FAN	PROTECTION DE VENTILATEUR	VENTILATORSCHUTZ	2	3	3	3
	38	A87VN00 002	VENTOLA	FAN	VENTILATEUR	VENTILATOR	2	3	3	3
	39	A87CX63 071	CAVO FERMA PANNELLI	CABLE STOPS PANELS	CÂBLE DE FIXATION DE PANNEAUX	PANEELHALTESEIL	2	2	2	2

SCHEMI ELETTRICI / ELECTRICAL DIAGRAMS



Title TUNNEL TN40-TN50-TN65-TN80 TOUCH 230V/3T		
Author		
File TRICO TN40-TN50-TN65-TN80 TOUCH 230V-3T	Document	
Revision 3.0	Date 11/08/2021	Sheets 1 of 1



Title TUNNEL TN40-TN50-TN65-TN80 TOUCH 400V/3NT	
Author	
File TRICO TN40-TN50-TN65-TN80 TOUCH 400V-3N	Document
Revision 3.0	Date 11/08/2021
	Sheets 1 of 1





